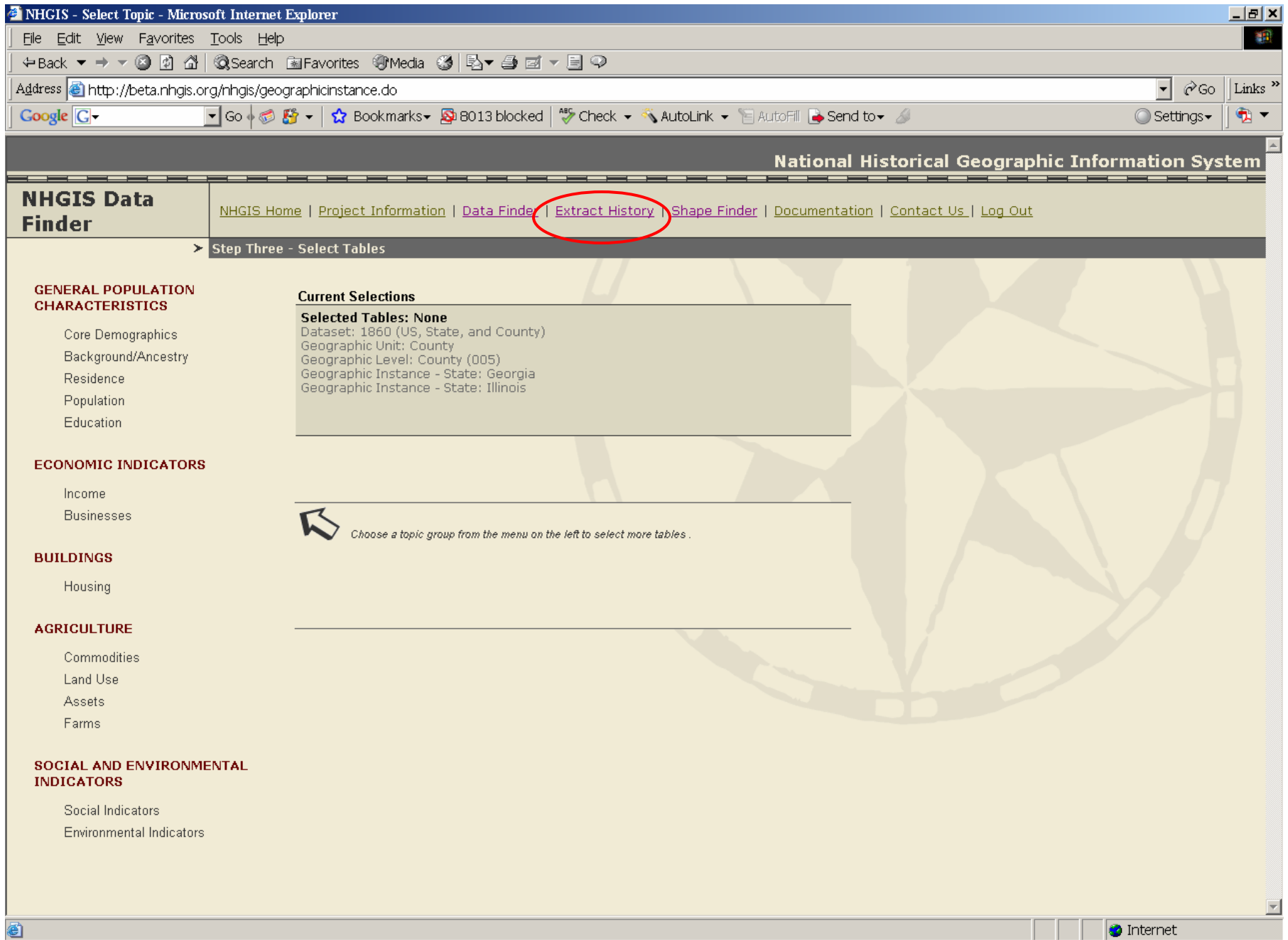


How to use the NHGIS Extract History

David Van Riper

3/26/2007

This tutorial shows users how to use the National Historical Geographic Information System (NHGIS) Extract History. This application allows users to revise previously made NHGIS extracts. This option is available on the horizontal navigation bar in NHGIS.



Step 1 – If you want to revise or view a previous extract you may click on the “Extract History” link (circled in red).

NHGIS - Extracts for vanriper@geog.umn.edu - Mozilla Firefox

File Edit View History Bookmarks Tools Help

http://beta.nhgis.org/nhgis/extractsummary.do

Hills018 SquirrelMail - Login

vanriper@geog.umn.edu-99	Thu Feb 08 10:40:53 CST 2007	2000 CPH	New England County Metropolitan Area New England County Metropolitan Area: Every New England County Metropolitan Area (all)		[view/revise]
vanriper@geog.umn.edu-100	Mon Feb 12 15:59:07 CST 2007	1930 HIST	Census Tract County: Los Angeles (0370) Census Tract: Every Census Tract (all)		[view/revise]
vanriper@geog.umn.edu-101	Thu Mar 15 07:59:15 CDT 2007	1800 HIST	State State: Indiana (180)		[view/revise]
vanriper@geog.umn.edu-102	Fri Mar 23 05:58:23 CDT 2007	1900 HIST	County County: Every County (all)		[view/revise]
vanriper@geog.umn.edu-103	Fri Mar 23 12:50:00 CDT 2007	1870 HIST	County State: Georgia (130) State: Alabama (010) State: Arkansas (050) State: Mississippi (280)		[view/revise]

http://beta.nhgis.org/nhgis/extractsummary.do?name=vanriper@geog.umn.edu-100

Step 2 – Click on one of the links circled in red to see that extract history.

NHGIS - View/Revise Extract - Mozilla Firefox

File Edit View History Bookmarks Tools Help

http://beta.nhgis.org/nhgis/extractsummary.do?name=vanriper@geog.umn.edu

Hills018 SquirrelMail - Login

National Historical Geographic Information System

NHGIS Data Finder

NHGIS Home | Project Information | Data Finder | Extract History | Shape Finder | Documentation | Contact Us | Log Out

> View/Revise Extract

Extract Summary: vanriper@geog.umn.edu-103

Dataset	1870 US, State, and County	
Geographies	County (005) <ul style="list-style-type: none"> ◆ County: Georgia (130) ◆ County: Alabama (010) ◆ County: Arkansas (050) ◆ County: Mississippi (280) 	Change Geography
Tables	Table <ul style="list-style-type: none"> ◆ Place of Birth (NT8 - HIST1870_CNTY) ◆ Population with One or Both Parents Foreign-Born by Nativity of Parents (NT6B - HIST1870_CNTY) 	Change Tables
Comment		
Download	<ul style="list-style-type: none"> ◆ GIS Comma-Separated Values file (best for GIS applications) ◆ ASCII codebook file 	

Done

Step 3 – You may re-download the datafiles by clicking on the links next to “Download”, or you may change the geography or tables by clicking the “Change Geography” or “Change Tables” buttons.

NHGIS - Select Topic - Mozilla Firefox

File Edit View History Bookmarks Tools Help

http://beta.nhgis.org/nhgis/reviseextract.do

Hills018 SquirrelMail - Login

National Historical Geographic Information System

NHGIS Data Finder

[NHGIS Home](#) | [Project Information](#) | [Data Finder](#) | [Extract History](#) | [Shape Finder](#) | [Documentation](#) | [Contact Us](#) | [Log Out](#)

Step Three - Select Tables

GENERAL POPULATION CHARACTERISTICS

- Core Demographics
- Background/Ancestry
- Residence
- Population
- Education

ECONOMIC INDICATORS

- Labor Force
- Income
- Businesses

BUILDINGS

- Housing

AGRICULTURE

- Commodities
- Land Use
- Assets
- Farms

Current Selections

Selected Tables: 2 [\[view/edit\]](#)

Dataset: 1870 (US, State, and County)
Geographic Unit: County
Geographic Level: County (005)
Geographic Instance - State: Georgia
Geographic Instance - State: Alabama
Geographic Instance - State: Arkansas
Geographic Instance - State: Mississippi

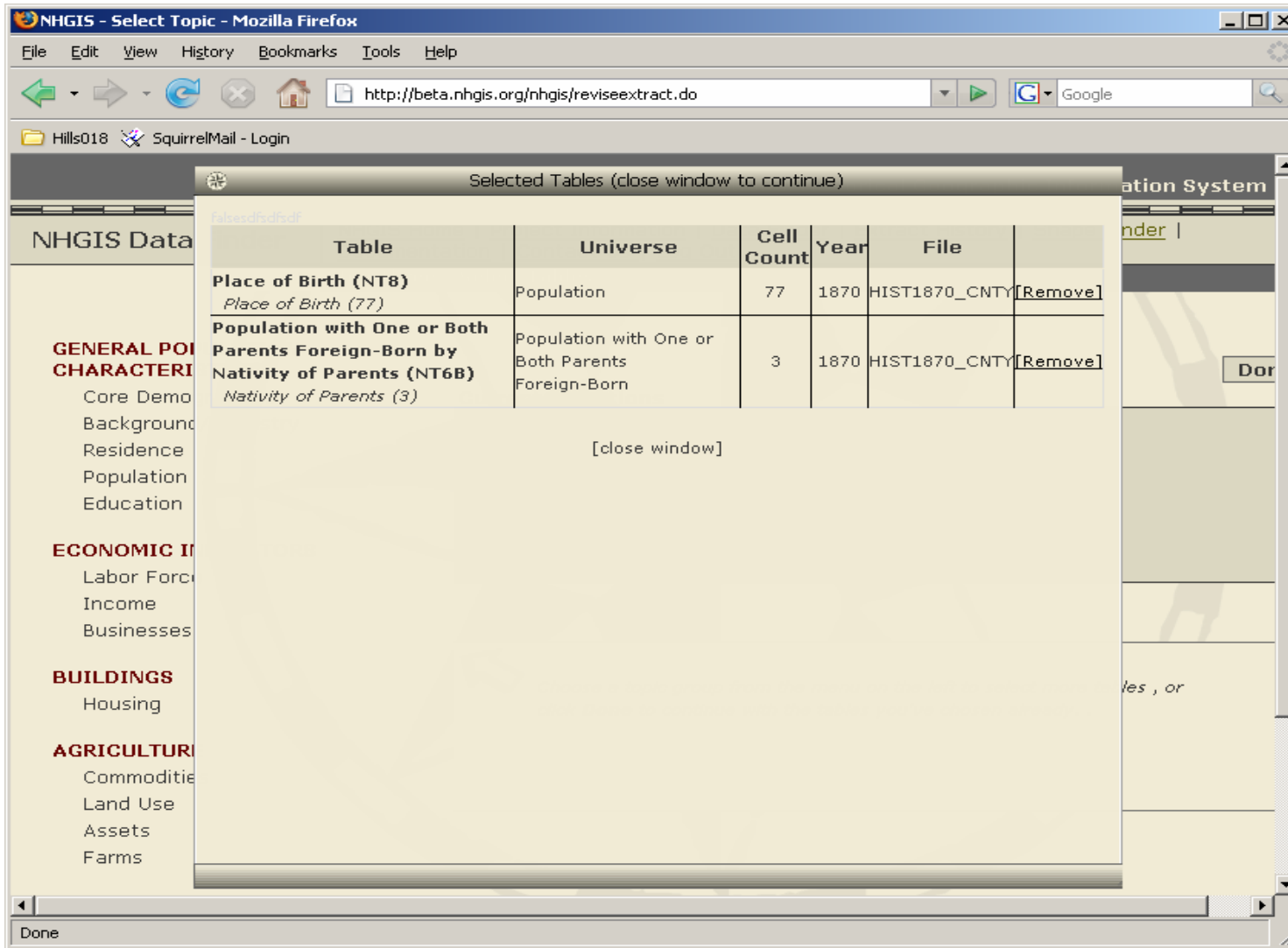
Click here to see the tables that you have selected.

Done

Choose a topic group from the menu on the left to select more tables, or click **Done** to continue with the tables you've chosen already.

http://beta.nhgis.org/nhgis/reviseextract.do#

If you want to view the tables you have already selected or remove tables you have selected, click on the “[view/edit]” link (circled in red).



When you click on the “[view/edit]” link, a small window entitled “Selected Tables” opens. This window shows details of the tables you have selected. If you want to remove a table from the selection, click on the “[Remove]” link in the far right column.